

Contexts and Roma Social policy in Slovenia



DEMOGRAPHIC DATA

Estimation:
7.000 – 12.000
Roma living in
Slovenia.

Source:
http://www.un.gov.si/si/manjsine/romska_skupnost/statisticni_in_osnovni_podatki/

| Regions in Slovenia with Roma population | Number of people who declared themselves as Roma in 2002: 3246 |
|---|--|
| Pomurska | 989 |
| Podravska | 712 |
| Koroška | 3 |
| Savinjska | 40 |
| Zasavska | 14 |
| Spodnjeposavska | 79 |
| Southeastern Slovenia | 1074 |
| Central Slovenia | 262 |
| Gorenjska | 49 |
| Notranjsko-kraška | 4 |
| Goriška | 14 |
| Obalno-kraška | 6 |
| Together | 3246 |

Source: Statistical Office of the Republic of Slovenia, 2002



RAZVOJNO
IZOBRAŽEVALNI
CENTER NOVO MESTO

ROMA PEOPLE IN SLOVENIA

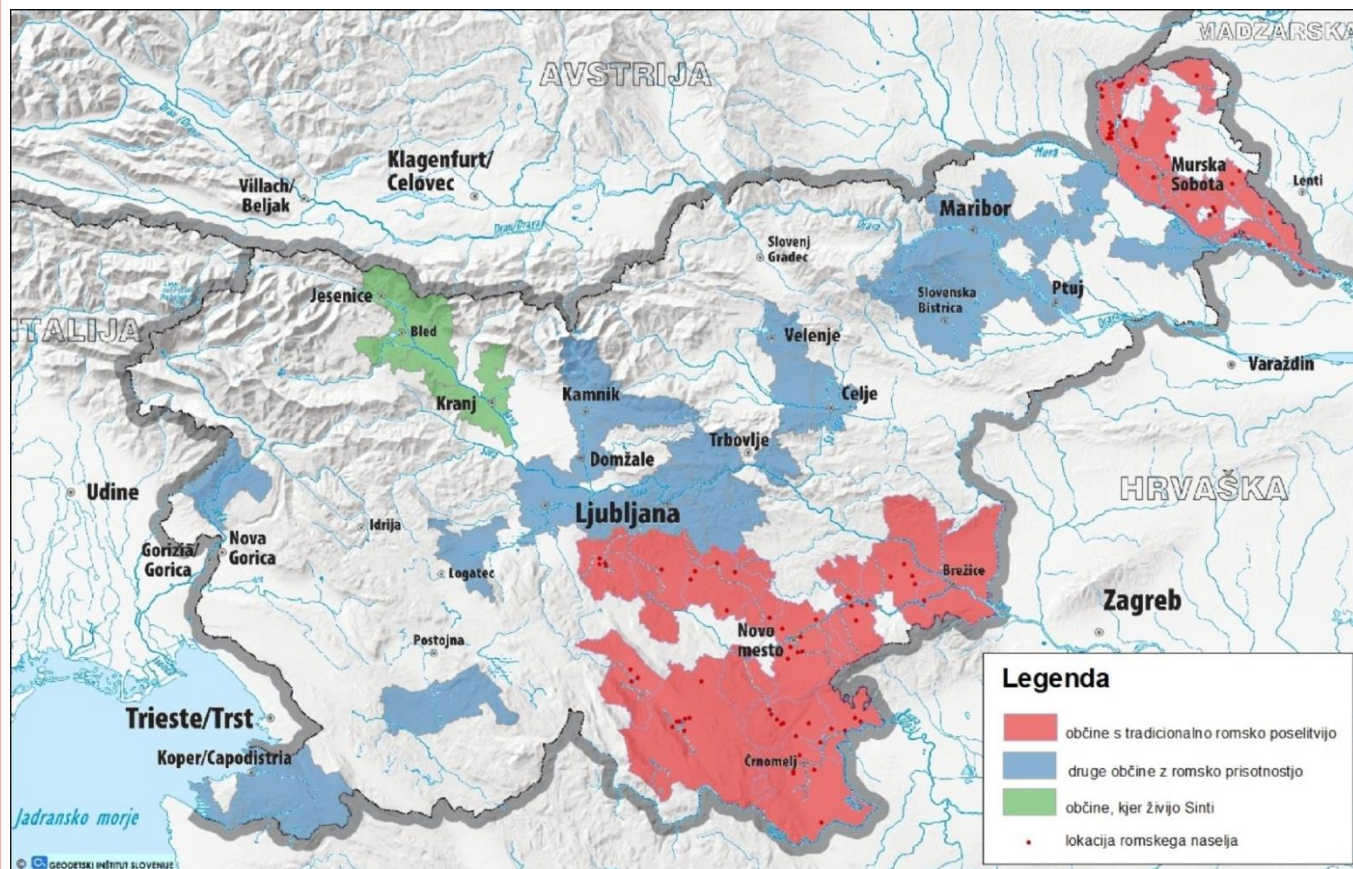


na
poti
znanja



RAZVOJNO
IZOBRAŽEVALNI
CENTER NOVO MESTO

ROMA PEOPLE IN SLOVENIA



na
poti
znanja

... give the
autochthonous
Roma the same
rights given to
the other two
recognized ethnic
minorities

CONSTITUTIONAL AND LEGAL POSITION

- **Constitution of the Republic of Slovenia (art. 65)**
- **Law on the Roma Groups**

Other legislation:

- National Programme of the Government of the Republic of Slovenia for the Roma for the 2010-2015 period (and for 2017 – 2021)
- [Nacionalni program ukrepov Vlade Republike Slovenije za Rome za obdobje 2017-2021, Priloga k Nacionalnemu programu ukrepov Vlade Republike Slovenije za Rome za obdobje 2017-2021](#)
- Education and Schooling Strategy for the Roma in the Republic of Slovenia, 2004
- Supplementation of the Education and Schooling Strategy for the Roma in the Republic of Slovenia, 2011

Important bodies and institutions:

- Commission of the Government of the Republic of Slovenia for the Protection of the Roma Community.
- Office for National Minorities

The basic strategic goals of the National Programme of Measures for the Roma for the 2010-2015

- to improve the living conditions of members of the Roma Community and to regulate their settlements;
- to improve the educational structure of members of the Roma Community and to improve the attendance of Roma children at pre-school institutions; to increase the number of children in compulsory education and increase the integration of youth and adults in continuing educational processes in accordance with the lifelong learning principle;
- to increase the employment rate and reduce unemployment in the Roma Community;
- to improve the health care of the Roma Community, especially by emphasising the improvement of the health care of children and women;
- to preserve and develop cultural, informative and publishing activities of the Roma Community and strive to preserve and develop various forms of the Roma language;
- to increase the awareness of the majority population regarding the existence, culture, customs and habits of the Roma Community and the awareness of the members of the minority about the rights and duties that the Roma have as citizens of the Republic of Slovenia.

Organisation

- **Local level**

representative bodies of Roma in
city/municipal councils of municipalities

- **State level**

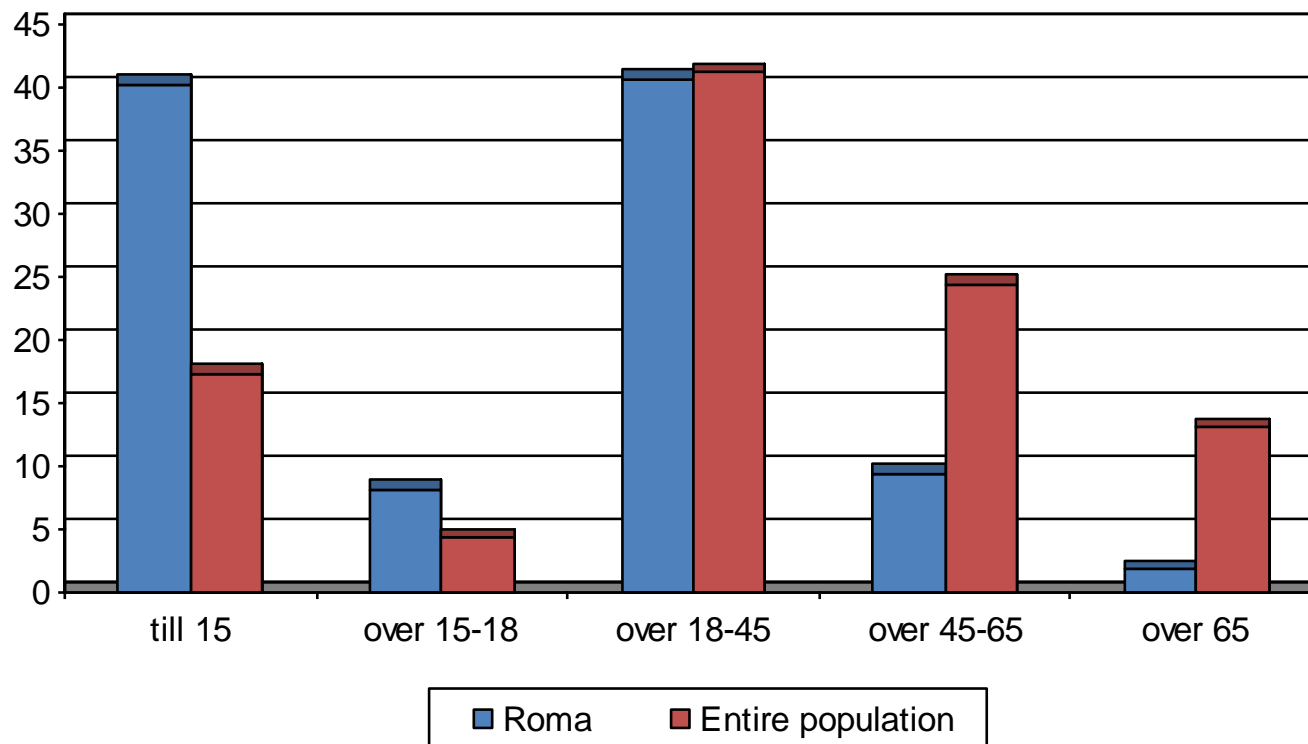
Council of the Roma Community in the
Republic of Slovenia was established on
20 June 2007

The Commission of the Government of
the Republic of Slovenia for the Protection
of the Roma Community

Expert Group for Resolving Spatial Issues
of Roma Settlements (Expert Group)

Age structure comparison

WHY IS A SPECIAL
ATTENTION PAID
TO THE ROMA?



Reasons for developing different approaches in Roma education

significant differences between the groups of Roma in Slovenia in education process

No trust in official institutions

Low participation in education and learning

Low motivation

Undeveloped learning habits

Their socio-demographic characteristics



RAZVOJNO
IZOBRAŽEVALNI
CENTER NOVO MESTO

ROMA SETTLEMENTS IN OUR AREA



na
poti
znanja

DEMOGRAFIC PICTURE OF THE ROMA POPULATION in OUR AREA

| Municipality | Number of Roma | Number of Roma (age between 15-45) |
|--|----------------|------------------------------------|
| Črnomelj, Semič | 747 | 348 |
| Ivančna Gorica, Grosuplje | 207 | 118 |
| Kočevje | 477 | 199 |
| Krško | 259 | 129 |
| Metlika | 286 | 142 |
| Novo mesto, Šentjernej, Škocjan, Žužemberk | 1134 | 537 |
| Ribnica | 118 | 49 |
| Trebnje | 246 | 108 |
| TOTAL | 3474 | 1630 |

Source: Centres for Social work in area, 2005

Characteristic of local Roma group

- the highest rates of school dropouts of Roma pupils
- Poor socio-cultural environment and life conditions - mainly do not give the possibility for their development in the pre-school years
- Previous knowledge is one of the basic problems when entering school – language barriers
- different life experiences, hygiene and working habits - which all lead to a lower success at school
- problem regarding their frequency in classes
- The number of children finishing the primary school is rising, but the final percent of those is still very low

THANK YOU
FOR YOUR
ATTENTION

*na
poti
znanja*



Take a look and read: www.ric-nm.si
www.facebook.com/ric.novomesto

Call us: 00 386 7 393 45 50,
00 386 41 555 870

Write us: meta.gaspersic@ric-nm.si
metod.pavselj@ric-nm.si

Visit us: RIC Novo mesto,
Topliška cesta 2, 8000 Novo mesto, Slovenia